



Profit from the Eagle Advantage®

# Specification Sheet

## Short Form Specifications

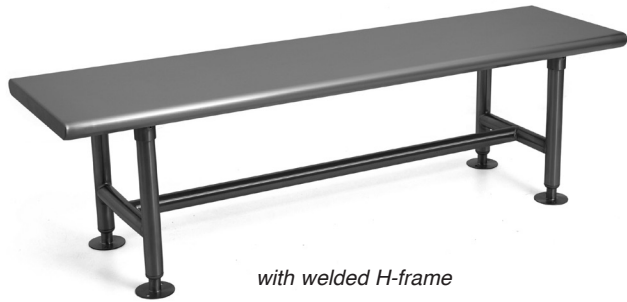
Eagle EL Series Heavy Duty Gowning Bench, model \_\_\_\_\_, 16"-wide 14 gauge type 304 series stainless steel. Flanged foot plates. 36" to 72" length. Front and rear feature a rolled edge, with 90° downturn on each end.

Item No.:	_____
Project No.:	_____
S.I.S. No.:	_____

## EL Series Heavy Duty Solid Gowning Benches

### MODELS:

- |                                      |                                      |                                    |
|--------------------------------------|--------------------------------------|------------------------------------|
| <input type="checkbox"/> ELGB1636-4  | <input type="checkbox"/> ELGB1636-H  | <input type="checkbox"/> ELGB-TRAY |
| <input type="checkbox"/> ELGB1636-4W | <input type="checkbox"/> ELGB1636-HW |                                    |
| <input type="checkbox"/> ELGB1648-4  | <input type="checkbox"/> ELGB1648-H  |                                    |
| <input type="checkbox"/> ELGB1648-4W | <input type="checkbox"/> ELGB1648-HW |                                    |
| <input type="checkbox"/> ELGB1660-4  | <input type="checkbox"/> ELGB1660-H  |                                    |
| <input type="checkbox"/> ELGB1660-4W | <input type="checkbox"/> ELGB1660-HW |                                    |
| <input type="checkbox"/> ELGB1672-4  | <input type="checkbox"/> ELGB1672-H  |                                    |
| <input type="checkbox"/> ELGB1672-4W | <input type="checkbox"/> ELGB1672-HW |                                    |



with welded H-frame



with adjustable 4-sided frame

### Design and Construction Features

- 14 gauge type 304 stainless steel construction.
- Choice of welded or adjustable H-frame or 4-sided frame.
- Rolled edge at front and rear of seat, with ends turned down at 90°.
- Hat channel on underside of seat for added strength.
- Stainless steel legs and flanged footplates.
- 1 5/8" (41mm)-diameter legs.
- Welded frames feature 1 5/8" (41mm)-diameter crossbracing.
- Adjustable frames feature 1 1/4" (32mm)-diameter crossbracing and heavy duty aluminum fittings.
- 17" (432mm) overall height on all units.

### Options / Accessories

- Shelf section (for units with 4-side frame only)

### EAGLE GROUP

100 Industrial Boulevard, Clayton, DE 19938-8903 USA  
 Phone: 302-653-3000 • 800-441-8440 • Fax: 302-653-2065  
[www.eaglegrp.com](http://www.eaglegrp.com)  
[www.eaglemhc.com](http://www.eaglemhc.com)

For custom configuration or fabrication needs, contact our **SpecFAB®** Division.  
 Phone: 302-653-3000 • Fax: 302-653-2065 • e-mail: [quotes@eaglegrp.com](mailto:quotes@eaglegrp.com)



EG04.13 Rev. 11/24

**Spec sheets available for viewing, printing or downloading from our online literature library at our websites**

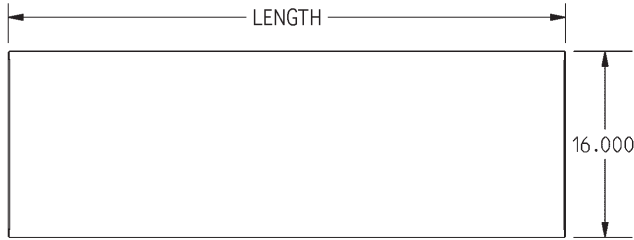
Eagle Foodservice Equipment, Eagle MHC, and SpecFAB® are divisions of Eagle Group. ©2024 by the Eagle Group



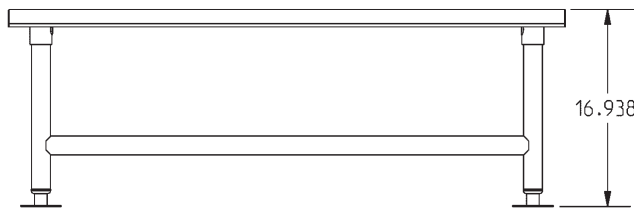
Profit from the Eagle Advantage®

Item No.: \_\_\_\_\_  
 Project No.: \_\_\_\_\_  
 S.I.S. No.: \_\_\_\_\_

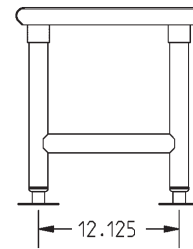
## EL Series Heavy Duty Solid Gowning Benches



TOP VIEW



FRONT VIEW



SIDE VIEW

(model with welded 4-sided frame shown)

### ...with Adjustable Frame

WITH 4-SIDED FRAME		WITH H-FRAME		width		length		weight	
model #		model #		in.	mm	in.	mm	lbs.	kg
ELGB1636-4		ELGB1636-H		16"	406	36"	914	33	15.0
ELGB1648-4		ELGB1648-H		16"	406	48"	1219	40	18.1
ELGB1660-4		ELGB1660-H		16"	406	60"	1524	47	21.3
ELGB1672-4		ELGB1672-H		16"	406	72"	1829	54	24.5

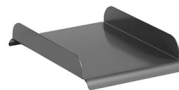
### ...with Welded Frame

WITH 4-SIDED FRAME		WITH H-FRAME		width		length		weight	
model #		model #		in.	mm	in.	mm	lbs.	kg
ELGB1636-4W		ELGB1636-HW		16"	406	36"	914	33	15.0
ELGB1648-4W		ELGB1648-HW		16"	406	48"	1219	40	18.1
ELGB1660-4W		ELGB1660-HW		16"	406	60"	1524	47	21.3
ELGB1672-4W		ELGB1672-HW		16"	406	72"	1829	54	24.5

### Optional Shelf Section

10" x 12" (254 x 305mm). For units with 4-Sided Frame only.

model #  
**ELGB-TRAY**



shelf section

for gowning bench length		quantity of shelf sections can be used
in.	mm	
36"	914	2
48"	1219	3
60"	1524	4
72"	1829	5

### EAGLE GROUP

100 Industrial Boulevard, Clayton, DE 19938-8903 USA

Phone: 302-653-3000 or 800-441-8440 • Fax: 302-653-2065

www.eaglegrp.com • www.eaglehmc.com

Printed in U.S.A.  
 ©2024 by Eagle Group

Rev. 11/24

Spec sheets available for viewing, printing or downloading from our online literature library at our websites

Although every attempt has been made to ensure the accuracy of the information provided, we cannot be held responsible for typographical or printing errors. Information and specifications are subject to change without notice. Please confirm at time of order.