

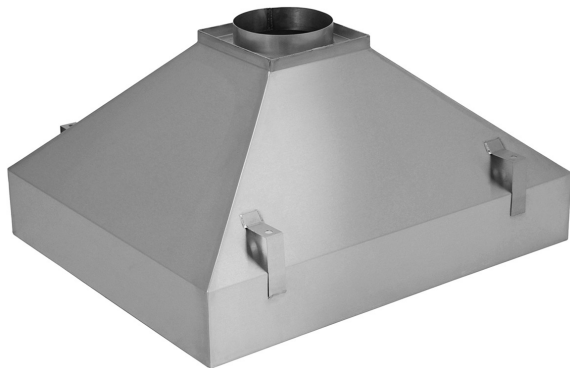


Profit from the Eagle Advantage®

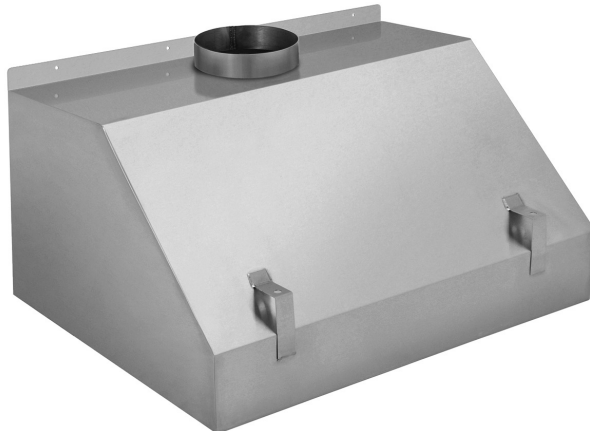
Specification Sheet

Short Form Specifications

Eagle Group Laboratory Exhaust Canopies, model # _____ . Island or wall mount exhaust canopies feature 16 gauge type 304 stainless steel construction, fully welded seams, polished interior and exterior, steel rod suspension brackets, full perimeter condensation edge, and integral 8"-diameter duct collar. Exhaust canopies are available in 30" and 36" depths, and widths ranging from 36" to 96".



#SSC-IEC-3630-18
island unit



#SSC-WEC-3630-18
wall unit

| | |
|--------------|-------|
| Item No.: | _____ |
| Project No.: | _____ |
| S.I.S. No.: | _____ |

Laboratory Exhaust Canopies

MODELS:

- | | |
|--|--|
| <input type="checkbox"/> SSC-IEC-3630-18 | <input type="checkbox"/> SSC-WEC-3630-18 |
| <input type="checkbox"/> SSC-IEC-4830-18 | <input type="checkbox"/> SSC-WEC-4830-18 |
| <input type="checkbox"/> SSC-IEC-6030-18 | <input type="checkbox"/> SSC-WEC-6030-18 |
| <input type="checkbox"/> SSC-IEC-7230-18 | <input type="checkbox"/> SSC-WEC-7230-18 |
| <input type="checkbox"/> SSC-IEC-8430-18 | <input type="checkbox"/> SSC-WEC-8430-18 |
| <input type="checkbox"/> SSC-IEC-9630-18 | <input type="checkbox"/> SSC-WEC-9630-18 |
| <input type="checkbox"/> SSC-IEC-3636-18 | <input type="checkbox"/> SSC-WEC-3636-18 |
| <input type="checkbox"/> SSC-IEC-4836-18 | <input type="checkbox"/> SSC-WEC-4836-18 |
| <input type="checkbox"/> SSC-IEC-6036-18 | <input type="checkbox"/> SSC-WEC-6036-18 |
| <input type="checkbox"/> SSC-IEC-7236-18 | <input type="checkbox"/> SSC-WEC-7236-18 |
| <input type="checkbox"/> SSC-IEC-8436-18 | <input type="checkbox"/> SSC-WEC-8436-18 |
| <input type="checkbox"/> SSC-IEC-9636-18 | <input type="checkbox"/> SSC-WEC-9636-18 |

Design & Construction Features:

- 16 gauge type 304 stainless steel construction.
- Fully welded seams.
- Polished interior and exterior.
- Integrated suspension brackets
- 8"-diameter x 2"-tall duct collar.
- Full-perimeter condensation edge.
- 36", 48", 60", 72", 84" and 96" widths.
- 30" and 36" depths.

EAGLE GROUP

100 Industrial Boulevard, Clayton, DE 19938-8903 USA
 Phone: 302-653-3000 • 800-441-8440 • Fax: 302-653-2065
www.eaglegrp.com
www.eaglemhc.com

For custom configuration or fabrication needs, contact our **SpecFAB®** Division.
 Phone: 302-653-3000 • Fax: 302-653-2065 • e-mail: quotes@eaglegrp.com

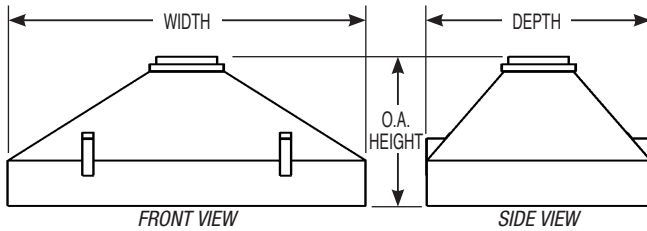
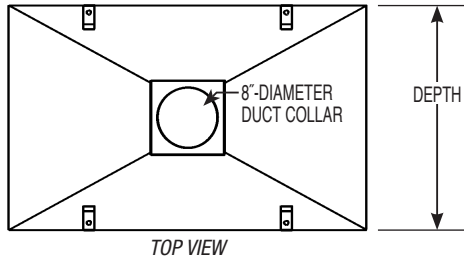
EG03.85 Rev. 05/24

Spec sheets available for viewing, printing or downloading from our online literature library at our websites

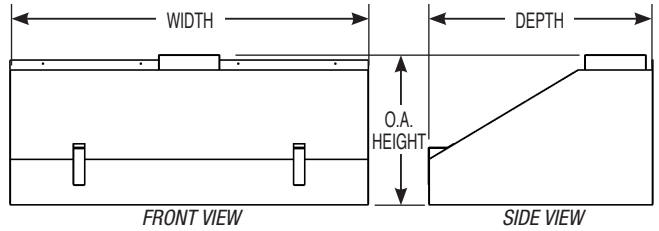
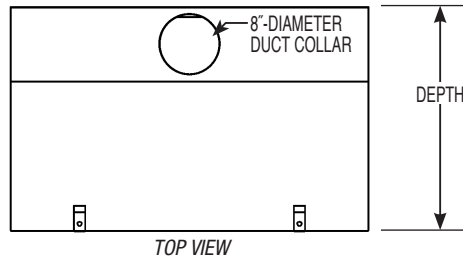
Item No.: _____
 Project No.: _____
 S.I.S. No.: _____

Laboratory Exhaust Canopies

Island models



Wall models



| | | | | Island models | | | Wall models | | |
|-------|-----|-------|------|-----------------|-----|------------------------|-----------------|-----|------------------------|
| depth | | width | | overall height* | | model # | overall height* | | model # |
| in. | mm | in. | mm | in. | mm | | in. | mm | |
| 30" | 762 | 36" | 914 | 19" | 483 | SSC-IEC-3630-18 | 20" | 508 | SSC-WEC-3630-18 |
| 30" | 762 | 48" | 1219 | 19" | 483 | SSC-IEC-4830-18 | 20" | 508 | SSC-WEC-4830-18 |
| 30" | 762 | 60" | 1524 | 19" | 483 | SSC-IEC-6030-18 | 20" | 508 | SSC-WEC-6030-18 |
| 30" | 762 | 72" | 1829 | 19" | 483 | SSC-IEC-7230-18 | 20" | 508 | SSC-WEC-7230-18 |
| 30" | 762 | 84" | 2133 | 19" | 483 | SSC-IEC-8430-18 | 20" | 508 | SSC-WEC-8430-18 |
| 30" | 762 | 96" | 2438 | 19" | 483 | SSC-IEC-9630-18 | 20" | 508 | SSC-WEC-9630-18 |
| 36" | 914 | 36" | 914 | 19" | 483 | SSC-IEC-3636-18 | 20" | 508 | SSC-WEC-3636-18 |
| 36" | 914 | 48" | 1219 | 19" | 483 | SSC-IEC-4836-18 | 20" | 508 | SSC-WEC-4836-18 |
| 36" | 914 | 60" | 1524 | 19" | 483 | SSC-IEC-6036-18 | 20" | 508 | SSC-WEC-6036-18 |
| 36" | 914 | 72" | 1829 | 19" | 483 | SSC-IEC-7236-18 | 20" | 508 | SSC-WEC-7236-18 |
| 36" | 914 | 84" | 2133 | 19" | 483 | SSC-IEC-8436-18 | 20" | 508 | SSC-WEC-8436-18 |
| 36" | 914 | 96" | 2438 | 19" | 483 | SSC-IEC-9636-18 | 20" | 508 | SSC-WEC-9636-18 |

* Height includes 2'-tall duct collar.

EAGLE GROUP
 100 Industrial Boulevard, Clayton, DE 19938-8903 USA
 Phone: 302-653-3000 or 800-441-8440 • Fax: 302-653-2065
 www.eaglegrp.com • www.eaglehmc.com

Printed in U.S.A.
 ©2024 by Eagle Group

Rev. 05/24

Spec sheets available for viewing, printing or downloading from our online literature library at our websites

Although every attempt has been made to ensure the accuracy of the information provided, we cannot be held responsible for typographical or printing errors. Information and specifications are subject to change without notice. Please confirm at time of order.